

This RS&A online course has been approved by the International Association for Identification [for 8 Hours of continuing education credits](#) for Latent Print Examiner Certification and Re-Certification.

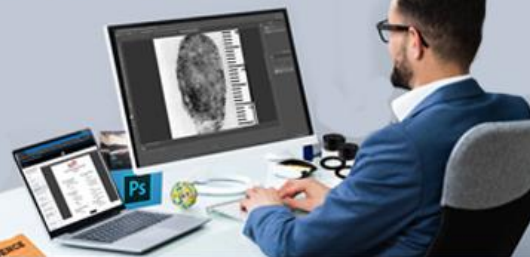
**International Association  
for Identification**



## COMMON SENSE DIGITAL IMAGING FOR LATENT PRINT EXAMINERS

Instructor: Matt Marvin

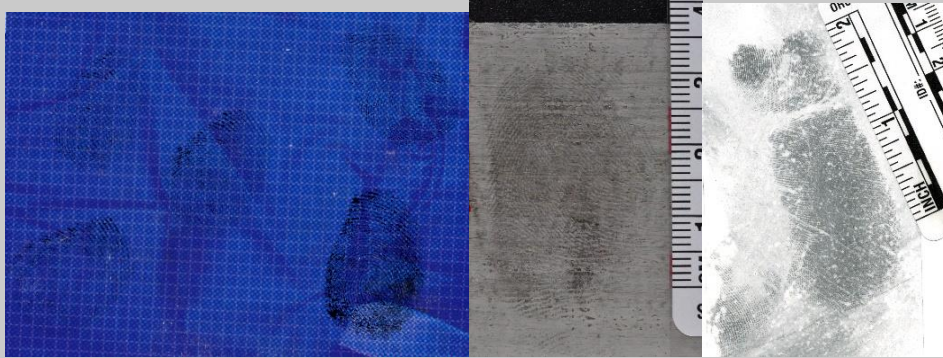
**LEARN ADOBE  
PHOTOSHOP**



**8 Hours | \$200.00 | 30 Day Access**

**BUY NOW!**

## Do you know what tools to use in Photoshop to make these images better for comparison purposes?



**Are you using Photoshop to enhance digital evidence in your casework?**

**Are you using Photoshop's many tools and techniques to the best of their ability?**

**Are you confident in your ability to use Photoshop as a Latent Print Examiner?**

In this online course, your instructor Matt Marvin, CLPE, CFWE will share his many years of experience and expertise applying digital imaging to latent print evidence using Photoshop.

This course is designed for latent print examiners of all levels. If you have little to no knowledge of Photoshop...this course is for you. If you have been using Photoshop for years...then this course is for you. Anyone who uses Photoshop to make side-by-side comparisons can and will benefit from completing this online course.

### **BUT THIS ONLINE COURSE ISN'T JUST FOR LATENT PRINT EXAMINERS!**

If you work in Photoshop you can benefit from the instruction and exercises contained in this online course.

In this course Matt will demonstrate and teach you to:

- Configure your Photoshop so that it is optimized for working with digital latent print evidence.
- Use image orientation techniques such as duplication, rotation, and canvas flip.
- Properly draw lines and arrows, drop dots, and insert text.
- Use the selection tools and invert images.
- Use basic enhancement techniques such as working with levels, shadows, and highlights.
- Apply area specific enhancements such as dodge and burn.
- Use color-based enhancements such as color modes, color channels, black and white adjustments, selective color, and color subtraction.
- Work with fine details by using sharpening techniques and tools.
- Use calculations to enhance your digital evidence.
- Calibrate images in two steps using rulers and image size.

- Correct perspective when images are not taken on a level plane.
- Use a scanner and scanner enhancement tools to capture digital evidence.

As you can see, you will learn some of the very best tools Photoshop has to offer. Not only will you learn the function behind each of these tools and how to use them, but you will learn how each of them applies directly to working with digital impression evidence.

All of these tool sets will be accompanied by exercises for you to hone your Photoshop skills and apply what you have learned.

This course teaches a tool and then builds on that tool as you progress through the course. You get world class instruction which teaches you professional techniques and shortcuts. Mastering these tools and techniques can save hours of time and frustration when using Photoshop and working with digital impression evidence.

[CLICK HERE FOR COMPLETE COURSE INFORMATION](#)

[BUY NOW!](#)

MATT MARVIN INTRODUCES HIS NEW ONLINE COURSE

# COMMON SENSE DIGITAL IMAGING FOR LATENT PRINT EXAMINERS

Instructor: Matt Marvin

LEARN ADOBE  
PHOTOSHOP

8 Hours | \$200.00 | 30 Day Access

*[Having Trouble? Click Here to Watch Video in Your Browser.](#)*

This RS&A online course has been approved by the International Association for Identification for 8 Hours of continuing education credits for Latent Print Examiner Certification and Re-Certification.

**International Association  
for Identification**

## **THIS COURSE IS JUST THE BEGINNING OF RS&A ONLINE!**

We have many new and exciting online training courses coming in the near future. Keep a check on our company website for newly posted online training classes: **[www.RonSmithandAssociates.com](http://www.RonSmithandAssociates.com)**

*Copyright © 2020 Ron Smith & Associates, Inc., All rights reserved.*

Connected with RS&A at a conference, through their website, by product purchases, or offers services of interest.

**Our mailing address is:**

Ron Smith & Associates, Inc.  
PO Box 670  
Collinsville, MS 39325-0670

[Add us to your address book](#)

Want to change how you receive these emails?

You can [update your preferences](#) or [unsubscribe from this list](#).

